



Pittsburgh Bonsai Society

...to disseminate knowledge, encourage others
and create interest in the art of bonsai

March 2011 Newsletters

NEXT MEETING

INTRO TO 2011: SPLIT SESSIONS

Beginners: "Everything about Bonsai in 30 Minutes"
Advanced: "More Spring Techniques"

Following the business meeting, we'll split into two sessions, with the more advanced members discussing and demonstrating techniques for resurrecting your winter trees, while the beginners intensively learn Bonsai 101.



Monday • March 14, 2011 • 7:00pm at Phipps Garden Center, Shadyside

NEXT EVENT

Mystery Workshop

Wednesday • April 20, 2011 • 7pm

Please check our newly updated website: <http://pittsburghbonsai.org>



The Pittsburgh Bonsai Society Newsletter

Editor:
Cindie Bonomi

Copy Editor:
Jay Miller

Graphic Design:
Cindie Bonomi

Contributors:
Jay Miller
Dave Metzgar

Photography:
Cindie Bonomi

Publishing & Circulation:
Jay Miller
Meg Amoudi

Published periodically (10 issues a year) by PBS for members and other bonsai enthusiasts. It's our sixth decade of advancing the art of bonsai in the Tri-State area.

Deadlines:
Generally one month prior to issue date

Submissions:
Please submit Photos or Artwork in JPG format and Copy in Microsoft Word.



A Note From Dave:

It's a dreary and cold, late winter day and I sit at my computer to write my first president's message. Looking past a few somewhat discontented Ficus trees on a table in front of my window at the blowing snow outside, it's hard to imagine working outdoors: re-potting, wiring, pruning, squashing bugs. But soon enough the days will lengthen and the sun's warmth will start to wake the trees from their winter rest. Yes, I can afford at this time to be poetic and wax on about the wonders of nature and the dreariness of winter. That's not really my style, though. As a sign maker by trade, I have learned to edit and give the message in the most concise way. With that in mind, here's how I got to be president:



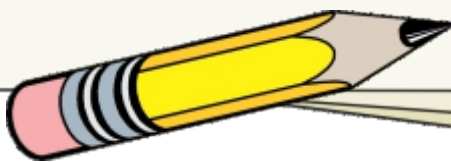
Photo by Cindie Bonomi

I developed an appreciation of plants in my mother's garden as a young boy, eventually taking over and expanding it to the point of producing more tomatoes than a small family has use for. When I was granted permission to use the electric hedge clippers, I turned our modest row of privet into a sculpture worthy of an English estate, with undulating waves and multi-level tiers, in my mind totally appropriate for a small suburban home. I was also pruning the junipers and other shrubs to reveal their trunks, not realizing I was practicing bonsai techniques at the time.

More than ten years ago I bought my first bonsai at an arts festival, a delicately flowered Serissa, a plant that must have in it's genes the knowledge that it won't live a long life in a pot, especially with a beginner. That summer, I hacked apart any plant I could get my hands on and my collection grew. I happened to find Evelyn Christie's bonsai supply business and was introduced to the PBS and the annual spring show. After joining the society, I volunteered to chair the show several years later. Actually, I raised my hand at a meeting and mentioned that I thought that the past few shows were "a little weak", so with my hand still raised, President Bob Dietz appointed me show chair. I've handled the shows since then with the help of Bob Grealish.

So as president, I hope rely on Bob, the other past presidents and the members whose experience dwarf my own, to keep the society growing, both in members and in appreciation of our fine little art form.

Dave Metzgar



For your Bonsai supplies support
the store that exists for the society



Bonsai In The Burgh

724-348-4771

Pots, wire, tools, soil, plants

Photos Of Our 2010 Holiday Party



Everyone seemed to have a great time at this year's Holiday Party

We even had music this time compliments of Lynne Squilla

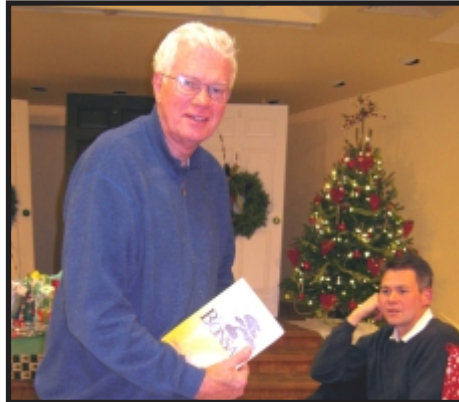


Great food and great company

Bob announced our White Elephant Exchange, Cindie and Lynne pulled the first person to pick a gift



2010 Holiday Party Continued:



Most of us were happy with our gifts and kept them, however some gifts *more than others* did appear to make their rounds



Haiku Corner

Winter rain--
the field stubble
has blackened.

-Basho

...and here are our avid winners of the Arborvitae center piece raffle



CUT HERE



Membership Application
or Renewal Form

Pittsburgh Bonsai Society

Membership Year: January 1 to December 31 Your continuing support is greatly appreciated

PLEASE PRINT NEATLY

Name (One Letter or Number Per Box)

Address (Number and Street, Rural Route or Post Office Box)

City or Town State Zip

Phone

Individual Membership.....\$30.00
 Family Membership.....\$40.00

E-Mail (Email address is used for membership database and member correspondence only. The Society will keep this info **CONFIDENTIAL**. (Please include!))

Date

Signature

I am a New Member

I am Renewing my Membership

Make your dues check payable to the Pittsburgh Bonsai Society and send it to:

Membership Chair
Meg Vates-Amoudi
Email: mvates@hotmail.com

544 Overlook Drive
Pittsburgh PA 15216
Phone: 412 477-7231

Membership Year:
January 1 to December 31

Officers for 2011

President Dave Metzgar



Vice President John Metcalf



Treasurer Mark Berbach



Recording Secretary Debbie Brys



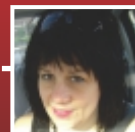
Corresponding Secretary Jay Miller



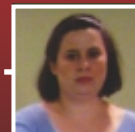
Past President Bob Grealish



Newsletter Cindie Bonomi



Membership Meg Vates-Amoudi



Member Survey

Please take a moment and help us with your comments.
We want to make your membership year as productive as possible

How did you originally learn of The Pittsburgh Bonsai Society?

- from a friend newspaper article PBS website the Internet
 Bonsai Classes at Phipps a flyer from a Garden Center

Would you like to receive your newsletters electronically? yes no

If yes, Name E-mail Address

Are your bonsai skills: beginner intermediate advanced

Please tell us what programs you'd prefer:

- lectures workshops with your trees demonstration & workshops Bonsai Basics

Questions:

The Pittsburgh Bonsai Society's 2011 Calendar Of Events

March 14	Mon 7pm	Intro to 2011: Split Sessions (Beginners: "Everything about Bonsai in 30 Minutes" Advanced: "More Spring Techniques")
April 20	Wed 7pm	Mystery Workshop
May 20-22	Fri-Sun	Spring Bonsai Weekend
Jun 15	Wed 7pm	Workshop: Trident Maples (tent.)
Jul 20	Wed 7pm	Auction!!!
Aug TBA	Sat 11am	Picnic at the Grealish Farm
Sep 21	Wed 7pm	Workshop: "Gold in that Garbage" working with orphans, strays and castoffs
Oct 19	Wed 7pm	TBA
Nov 16	Wed 7pm	TBA plus Elections
Dec 7	Wed 6:30pm	Annual Holiday Party

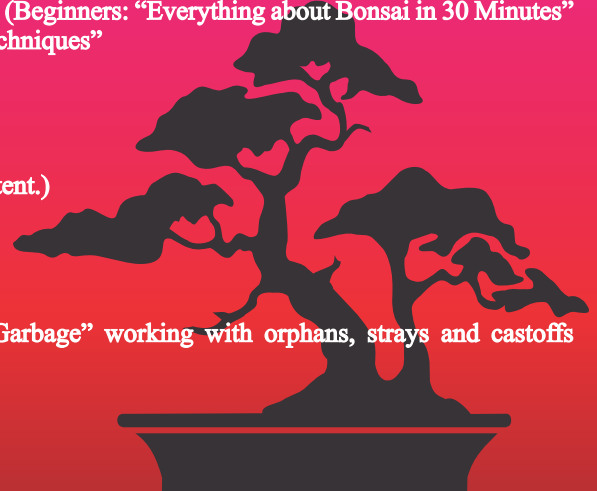
All events, unless otherwise noted, will be held at the Phipps Garden Center, starting at 7:00pm

Phipps Garden Center is located at the edge of Mellon Park in the Shadyside section of Pittsburgh. At the Phipps Garden Center sign on Shady Avenue, just south of the intersection of Fifth and Shady Avenues, turn into the cobblestone driveway. Park in the metered lot. Walk 50 yards farther down the cobblestone lane. The Garden Center is the red brick building on your left

Severe Weather & Emergency Information

PBS Meetings and Special Events at Phipps Garden Center will take place as scheduled except in the event of severe weather or emergency. Unsure? Call their Emergency Phone Number: 412 441-4442 for updates.

OUT HERE



February at the National Arboretum's National Bonsai & Penjing Museum



Photo compliments of the internet

by Jay Miller

I'll take any opportunity during a Washington DC trip to slip away for a visit to the National Arboretum and their amazing collection of Bonsai

and Suiseki. In winter, all three collections, Chinese, Japanese and American are combined in the Chinese Pavilion. The Tropical Collection remains in their special greenhouse.

Some may feel that placing all the conifer and deciduous trees so closely together is distracting; I disagree. It's fun to compare and contrast the styling of similar species; flowing lines and ramification of branches reflect the decades of patience and imagination in the development of these superior trees.

Keith Scott's Smooth Leaf Elm, *Ulmus carpinifolia*, still dominates the entrance to the Chinese Pavilion. John Naka's Blue Atlas Cedar, *Cedrus atlantica*, is a simple but powerful formal upright treatment, while his famous forest "Goshin", a *Foemina Juniper*, just flat takes your breath away. Brussel Martin contributed a Trident Maple forest with classic design and lots of detail. Mike Stern would love Vaughn Banting's impressive Sweet Gum, striking in its revealing winter structure.

Despite the howling winds outside, bonsai enthusiasts and curious tourist families alike murmured their appreciation of favorite trees. A heartening sign of spring (not our PA groundhog) was the already-opening neon green buds of a gigantic Chinese Quince!

MABS MidAtlantic Bonsai Societies 28 Annual Spring Festival will be held in Grantville, PA April 15-17 2011 at the Holiday Inn (Harrisburg/Hershey) This is an easy 3.5hr drive from Pittsburgh (without Turnpike Construction) and features Yasuo Mitsuya (Japan) Steve Tolley (U.K.) and Kathy Shaner (USA) Each artist will conduct several lecture/demonstrations, a critique and a workshop during the weekend. Info: <http://midatlanticbonsai.freeservers.com> or Email: bkobyne@yahoo.com.

Bring your best friend to a monthly meeting...

We're Talking About Your Favorite Tree!

—by Dave Metzgar

Since the main idea of the society is to appreciate trees, why not have them at every meeting? Bring in your favorite variety, your most unusual style or the one that needs some styling help.

At every regular meeting, we will have a spotlight artist casually discuss what they have to display, ten minutes before the regular business begins at 7pm. The spotlight artist can be an experienced member with finished trees, or a newer member who needs help. If you are interested, contact me to be the main presenter, but you can also bring them in anytime to discuss with fellow members.



ANNOUNCEMENTS

Coming Events

16-19 June 2011

Louisville KY:

"Bonsai in the Bluegrass"
ABS Convention & Learning Seminar; Fern Valley Hotel and Convention Center, Louisville

A Reminder about Annual Dues:

You'll find a "short form" dues renewal notice in this issue. Our Membership Year is January 1 to December 31. Your Society relies on your support and participation in order to bring the programs that we all enjoy. (Dues remain: \$30 individual and \$40 per family).

Newsletter Information:

It's easy to make an announcement or contribute to the PBS Newsletter. If it is text only, call or email Jay Miller at 412 481-4540 susekifan@yahoo.com If it is a sketch or photo, email Cindie Bonomi at cindiebonomi@yahoo.com

April 2011 Issue Deadline:
Submissions for the April 2011 Newsletter are due no later than March 16, 2011.

Compiled by Jay Miller



Pittsburgh Bonsai Society
c/o Cindie Bonomi (Editor)
335 Newburn Drive
Pittsburgh, PA 15216

